

# Enversa Layered Residual Comparison Brooklyn, WI 2024

## Trial Information

Trial Sponsor: Corteva

Objective: Compare the crop safety profile and waterhemp control of **\*Enversa** to other group 15 herbicides on the market.

Crop: Soybean

Hybrid: O'SOY 2024EL-3

Weed species (pressure): glyphosate-resistant waterhemp

Herbicide Application(s): PRE – 5/24  
POST – 6/20 (V2 soybean)

---

**\*Enversa** is a new herbicide offering from Corteva containing encapsulated acetochlor.

---

For the full report see trial #24-BRO-SB02 in the [2024 Wisconsin Weed Science Research Report](#)



**CORTEVA**<sup>™</sup>  
agriscience



**Cropping Systems Weed Science**  
UNIVERSITY OF WISCONSIN-MADISON

# Enversa Layered Residual Comparison (Brooklyn, WI 2024)

Trt #	Herbicide (rate acre <sup>-1</sup> )	Necrosis (%)		Waterhemp (%)			Yield <sup>b</sup> bu acre <sup>-1</sup>
		6 DAT	13 DAT	13 DAT	27 DAT	9/18	
1	Treated Check <sup>c</sup>	0	0	0	0	0	66 a
<b>Two-Pass – PRE<sup>c</sup> (5/24) fb POST (6/20)</b>							
2	Enlist One (2 pt) + Roundup PM3 (30 oz) + AMS <sup>d</sup>	3.0	1.3	93	88	96	70 a
3	Enlist One (2 pt) + Roundup PM3 (30 oz) + Enversa (3 pt) + AMS <sup>d</sup>	2.3	1.8	92	85	92	69 a
4	Enlist One (2 pt) + Roundup PM3 (30 oz) + Warrant (3 pt) + AMS <sup>d</sup>	2.3	2.3	93	88	96	68 a
5	Enlist One (2 pt) + Roundup PM3 (30 oz) + Dual II Magnum (1.25 pt) + AMS <sup>d</sup>	5.3	1.8	90	85	95	68 a
6	Enlist One (2 pt) + Roundup PM3 (30 oz) + Zidua SC (2.5 fl oz) + AMS <sup>d</sup>	4.3	1.8	94	91	97	67 a
7	Enlist One (2 pt) + Liberty (32 oz) + AMS <sup>d</sup>	9.8	1.5	97	88	96	69 a
8	Enlist One (2 pt) + Liberty (32 oz) + Enversa (3 pt) + AMS <sup>d</sup>	8.8	1.5	98	87	96	69 a
9	Enlist One (2 pt) + Liberty (32 oz) + Warrant (3 pt) + AMS <sup>d</sup>	11.8	2.5	98	91	95	70 a
10	Enlist One (2 pt) + Liberty (32 oz) + Dual II Magnum (1.25 pt) + AMS <sup>d</sup>	11.8	2.0	97	89	96	70 a
11	Enlist One (2 pt) + Liberty (32 oz) + Zidua SC (2.5 fl oz) + AMS <sup>d</sup>	11.3	1.8	98	95	98	69 a
<b>LSD (<math>\alpha=0.10</math>)</b>		<b>1.5</b>	<b>ns</b>	<b>3</b>	<b>4</b>	<b>ns</b>	<b>ns</b>
<b>p value</b>		<b>&lt;.001</b>	<b>0.677</b>	<b>&lt;.001</b>	<b>0.016</b>	<b>0.670</b>	<b>0.257</b>

<sup>a</sup>Visual control from 70-100% is illustrated on a color scale with green representing greater weed control values.

<sup>b</sup>Yield values with the same letter are not significantly different.

<sup>c</sup>A lower rate of Sonic (2.5 oz/a) was applied PRE over the entire trial area including the treated check (treatment #1)

<sup>d</sup>All POST applications included AMSOL (liquid AMS) applied at 2.5% v/v.



# Weed Size Day of the POST Application





# Weed Size Day of the POST Application





# Enversa Layered Residual Comparison Brooklyn, WI 2024

Plot pictures taken on 6/26  
6 days after the POST application

The number in the upper right-hand corner is the average %  
soybean injury of 4 replications



6 days after POST (6/26)

PRE: 2.5 oz Sonic *fb*

3%

POST: 2 pt Enlist One + 30 oz Roundup PowerMAX3 + AMS





6 days after POST (6/26)

PRE: 2.5 oz Sonic *fb*

2%

POST: 2 pt Enlist One + 30 oz Roundup PM3 + 3 pt Enversa + AMS





6 days after POST (6/26)

PRE: 2.5 oz Sonic *fb*

2%

POST: 2 pt Enlist One + 30 oz Roundup PM3 + 3 pt Warrant + AMS





6 days after POST (6/26)

PRE: 2.5 oz Sonic *fb*

5%

POST: 2 pt Enlist One + 30 oz RU PM3 + 1.25 pt Dual II Magnum + AMS





6 days after POST (6/26)

PRE: 2.5 oz Sonic *fb*

4%

POST: 2 pt Enlist One + 30 oz Roundup PM3 + 2.5 oz Zidua SC + AMS





6 days after POST (6/26)

PRE: 2.5 oz Sonic *fb*

POST: 2 pt Enlist One + 32 oz Liberty + AMS

10%





6 days after POST (6/26)

PRE: 2.5 oz Sonic *fb*

9%

POST: 2 pt Enlist One + 32 oz Liberty + 3 pt Enversa + AMS





6 days after POST (6/26)

PRE: 2.5 oz Sonic *fb*

12%

POST: 2 pt Enlist One + 32 oz Liberty + 3 pt Warrant + AMS



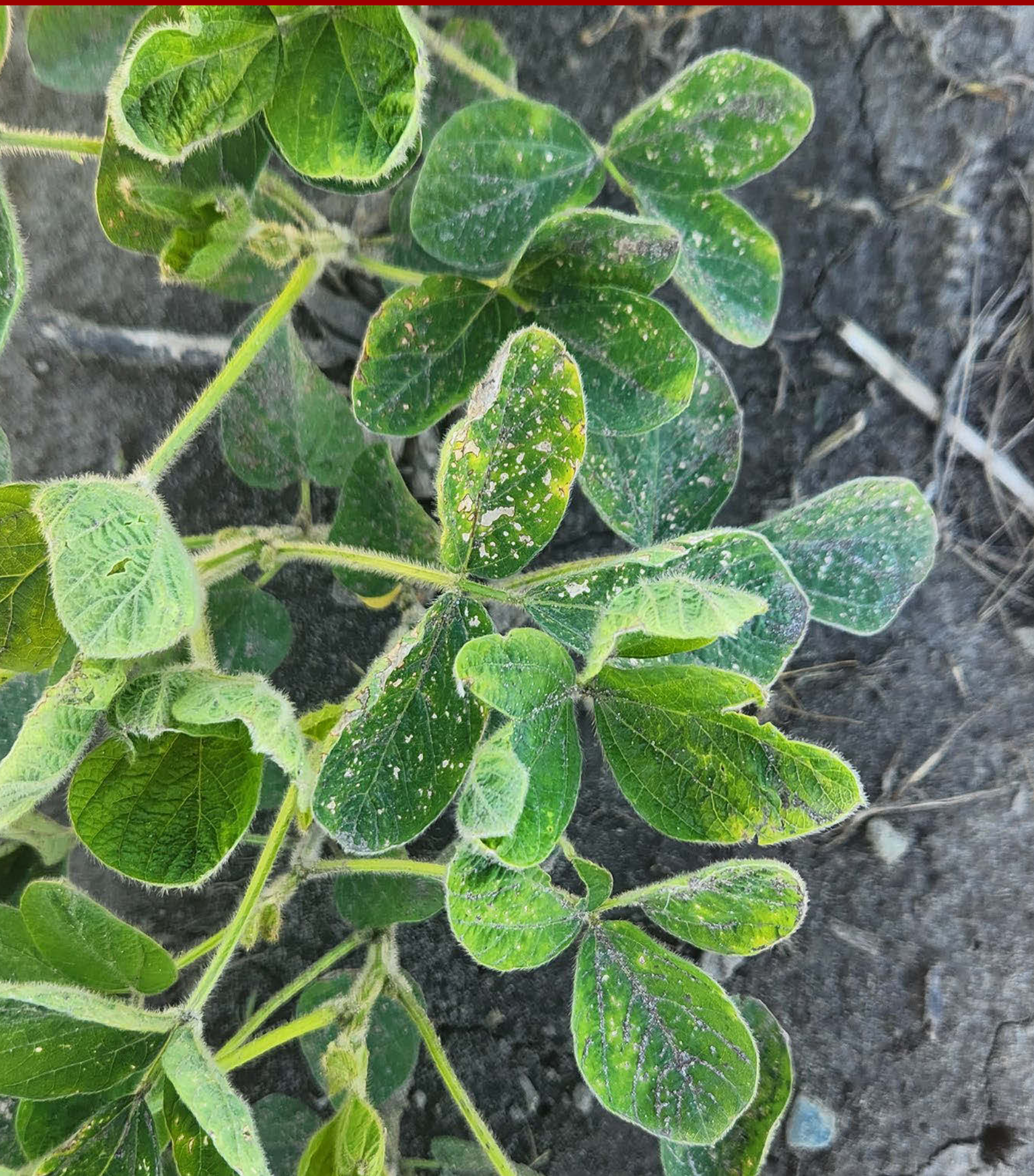


6 days after POST (6/26)

PRE: 2.5 oz Sonic *fb*

12%

POST: 2 pt Enlist One + 32 oz Liberty + 1.25 pt Dual II Magnum + AMS





6 days after POST (6/26)

PRE: 2.5 oz Sonic *fb*

11%

POST: 2 pt Enlist One + 32 oz Liberty + 2.5 oz Zidua SC + AMS





# Enversa Layered Residual Comparison Brooklyn, WI 2024

Plot pictures taken on 7/3  
13 days after the POST application

The number in the upper right-hand corner is the average %  
waterhemp control of 4 replications



13 days after POST (7/3)  
PRE: 2.5 oz Sonic fb

0%





13 days after POST (7/3)

PRE: 2.5 oz Sonic *fb*

POST: 2 pt Enlist One + 30 oz Roundup PowerMAX3 + AMS

93%





13 days after POST (7/3)

PRE: 2.5 oz Sonic *fb*

92%

POST: 2 pt Enlist One + 30 oz Roundup PM3 + 3 pt Enversa + AMS





13 days after POST (7/3)

PRE: 2.5 oz Sonic *fb*

93%

POST: 2 pt Enlist One + 30 oz Roundup PM3 + 3 pt Warrant + AMS





13 days after POST (7/3)

PRE: 2.5 oz Sonic *fb*

90%

POST: 2 pt Enlist One + 30 oz RU PM3 + 1.25 pt Dual II Magnum + AMS





13 days after POST (7/3)

PRE: 2.5 oz Sonic *fb*

94%

POST: 2 pt Enlist One + 30 oz Roundup PM3 + 2.5 oz Zidua SC + AMS





13 days after POST (7/3)

PRE: 2.5 oz Sonic *fb*

POST: 2 pt Enlist One + 32 oz Liberty + AMS

97%





13 days after POST (7/3)

PRE: 2.5 oz Sonic *fb*

98%

POST: 2 pt Enlist One + 32 oz Liberty + 3 pt Enversa + AMS





13 days after POST (7/3)

PRE: 2.5 oz Sonic *fb*

98%

POST: 2 pt Enlist One + 32 oz Liberty + 3 pt Warrant + AMS





13 days after POST (7/3)

PRE: 2.5 oz Sonic *fb*

97%

POST: 2 pt Enlist One + 32 oz Liberty + 1.25 pt Dual II Magnum + AMS





13 days after POST (7/3)

PRE: 2.5 oz Sonic *fb*

98%

POST: 2 pt Enlist One + 32 oz Liberty + 2.5 oz Zidua SC + AMS





# Enversa Layered Residual Comparison Brooklyn, WI 2024

Plot pictures taken on 7/17  
27 days after the POST application

The number in the upper right-hand corner is the average %  
waterhemp control of 4 replications



27 days after POST (7/17)  
PRE: 2.5 oz Sonic fb

0%





27 days after POST (7/17)

PRE: 2.5 oz Sonic *fb*

88%

POST: 2 pt Enlist One + 30 oz Roundup PowerMAX3 + AMS





27 days after POST (7/17)

PRE: 2.5 oz Sonic *fb*

85%

POST: 2 pt Enlist One + 30 oz Roundup PM3 + 3 pt Enversa + AMS





27 days after POST (7/17)

PRE: 2.5 oz Sonic *fb*

88%

POST: 2 pt Enlist One + 30 oz Roundup PM3 + 3 pt Warrant + AMS





27 days after POST (7/17)

PRE: 2.5 oz Sonic *fb*

85%

POST: 2 pt Enlist One + 30 oz RU PM3 + 1.25 pt Dual II Magnum + AMS





27 days after POST (7/17)

PRE: 2.5 oz Sonic *fb*

91%

POST: 2 pt Enlist One + 30 oz Roundup PM3 + 2.5 oz Zidua SC + AMS





27 days after POST (7/17)

PRE: 2.5 oz Sonic *fb*

88%

POST: 2 pt Enlist One + 32 oz Liberty + AMS





27 days after POST (7/17)

PRE: 2.5 oz Sonic *fb*

87%

POST: 2 pt Enlist One + 32 oz Liberty + 3 pt Enversa + AMS





27 days after POST (7/17)

PRE: 2.5 oz Sonic *fb*

91%

POST: 2 pt Enlist One + 32 oz Liberty + 3 pt Warrant + AMS





27 days after POST (7/17)

PRE: 2.5 oz Sonic *fb*

89%

POST: 2 pt Enlist One + 32 oz Liberty + 1.25 pt Dual II Magnum + AMS





27 days after POST (7/17)

PRE: 2.5 oz Sonic *fb*

95%

POST: 2 pt Enlist One + 32 oz Liberty + 2.5 oz Zidua SC + AMS





# Enversa Layered Residual Comparison Brooklyn, WI 2024

Plot pictures taken on 10/1  
The day of soybean harvest

The number in the upper right-hand corner is the average %  
waterhemp control of 4 replications







**Soybean Harvest (10/1)**

**PRE: 2.5 oz Sonic *fb***

**96%**

**POST: 2 pt Enlist One + 30 oz Roundup PowerMAX3 + AMS**





**Soybean Harvest (10/1)**

**PRE: 2.5 oz Sonic *fb***

**92%**

**POST: 2 pt Enlist One + 30 oz Roundup PM3 + 3 pt Enversa + AMS**





**Soybean Harvest (10/1)**

**PRE: 2.5 oz Sonic *fb***

**96%**

**POST: 2 pt Enlist One + 30 oz Roundup PM3 + 3 pt Warrant + AMS**





**Soybean Harvest (10/1)**

**PRE: 2.5 oz Sonic *fb***

**95%**

**POST: 2 pt Enlist One + 30 oz RU PM3 + 1.25 pt Dual II Magnum + AMS**





**Soybean Harvest (10/1)**

**PRE: 2.5 oz Sonic *fb***

**97%**

**POST: 2 pt Enlist One + 30 oz Roundup PM3 + 2.5 oz Zidua SC + AMS**





**Soybean Harvest (10/1)**

**PRE: 2.5 oz Sonic *fb***

**96%**

**POST: 2 pt Enlist One + 32 oz Liberty + AMS**





**Soybean Harvest (10/1)**

**PRE: 2.5 oz Sonic *fb***

**96%**

**POST: 2 pt Enlist One + 32 oz Liberty + 3 pt Enversa + AMS**





**Soybean Harvest (10/1)**

**PRE: 2.5 oz Sonic *fb***

**95%**

**POST: 2 pt Enlist One + 32 oz Liberty + 3 pt Warrant + AMS**





**Soybean Harvest (10/1)**

**PRE: 2.5 oz Sonic *fb***

**96%**

**POST: 2 pt Enlist One + 32 oz Liberty + 1.25 pt Dual II Magnum + AMS**





**Soybean Harvest (10/1)**

**PRE: 2.5 oz Sonic *fb***

**98%**

**POST: 2 pt Enlist One + 32 oz Liberty + 2.5 oz Zidua SC + AMS**

